

Syrian Private University

Medical Faculty

Medical Terminology

Lecture 1

M.A.Kubtan, M.D - FRCS

Basic Word Structure

Word analysis :

Medical words need to be analyzed :

HEMATOLOGY

Hemat

Root = Blood

O

Combining = Vowel

Logy

Suffix = Study
of

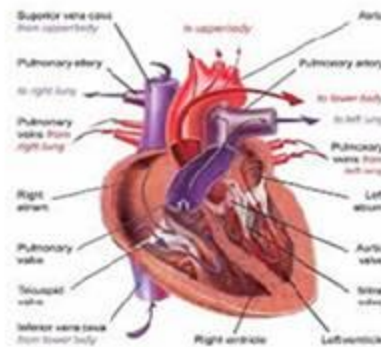
Electrocardiogram

Electr o cardi o gram

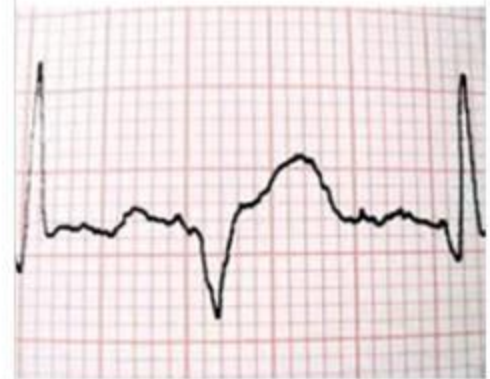
Electro
Root = electricity



Cardio
Root= Heart



Gram
Record

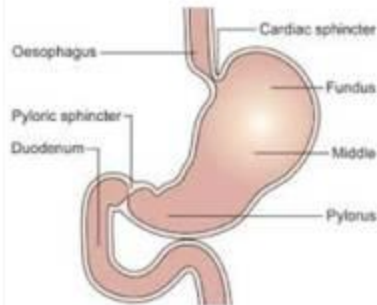


GASTRO ENTEROLOGY

Gastr o enter o logy

GASTR

Root = Stomach



Enter

Root = Intestines



Logy

Study of



GASTROSCOPE

Gastr o scope

Gastro

Root = stomach
Pre pyloric ulcer



Scope = Suffix

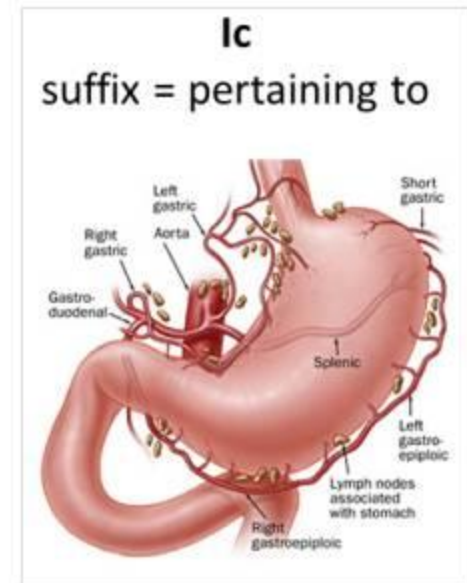
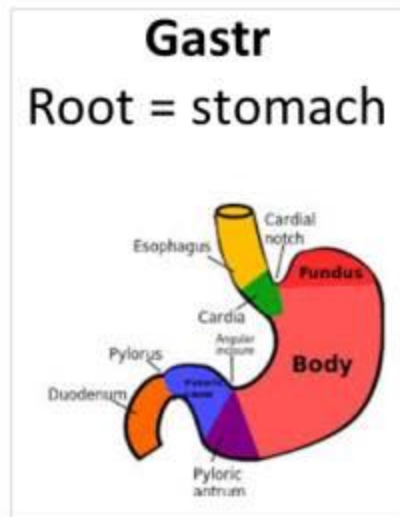
Instrument to
visually examine



Gastric

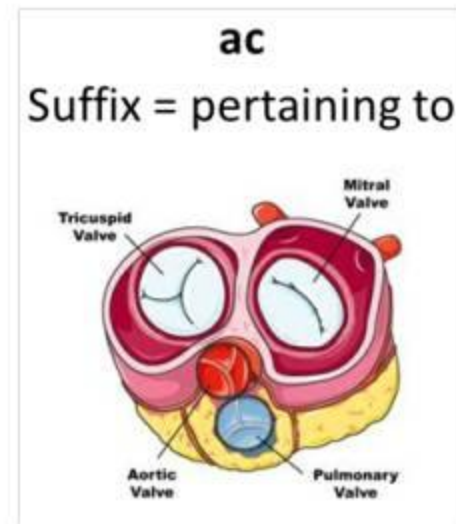
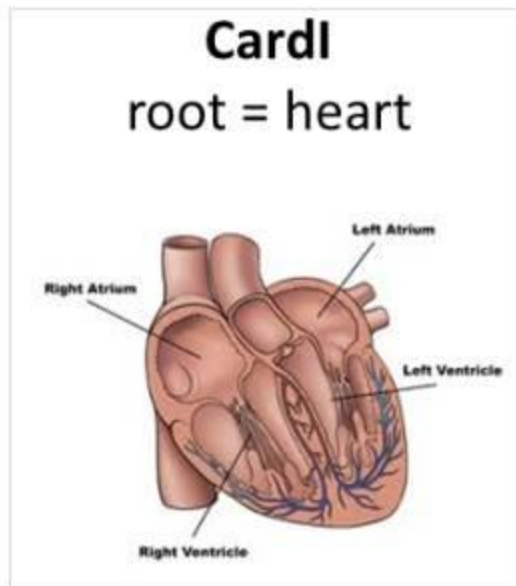
- Pertaining to stomach
- Words ending in – IC are adjectives and mean pertaining to (related to).

Gastr IC



CARDIAC

Cardi ac



ENTERITIS

Enter itis

Enter
root = intestines



Itis
suffix = inflammation



GASTROENTERITIS

Gastr o enter itis

Gastro

root = stomach



enter

root = intestines



itis

suffix = inflammation



MEDICAL TREMS

Prefix : a word part attached to the **beginning** of the term .

SUB/ gastr/ic : *below the stomach*

TRANS/ gastr/ic : *across the stomach*

RETRO/gastr/ ic : *behind the stomach*

Combining Forms

Suffixes & Prefixes

- Aden/o > gland > ma > adenoma > mass / tumor
- Aden/itis > inflammation
- Arthr/o >>> joint >>> arthritis
- Bi/o >>> life >>> bi/o/logy
- Carcin/o/ma >> carcinoma >>> cancer
- Cyt/o/logy >> cytology .
- Cyst/o/scope >> cystoscope .

Suffixes

- -al > pertaining to
- Algia > pain
- -cyte > cell
- -ectomy > removal
- -emia > blood
- -gram > record
- -ic > pertaining to
- -itis > inflammation
- -ism > condition
- -logist > specialist
- -logy > study of
- -oma > tumor , mass
- -opsy > to view
- -scope > instrument to visually examine

Prefixes

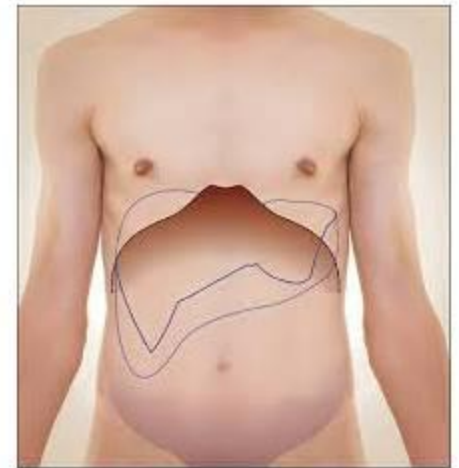
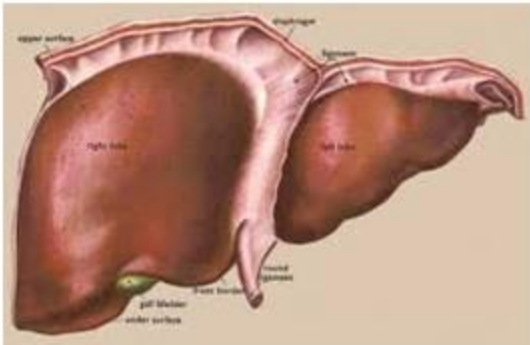
- a- >> no
(acalculus cholecystitis)
- an- >> not
(anaerobic infection)
- aut- >> self
(autolysis)
- dys- >> bad , abnormal
dyspepsia .
- Endo- >> within
(endoluminal)
- Exo- >> outside
(exogastric)
- Hyper->> Excessive
(hypertension)
- Hypo - >> below , less
(hypothyroidism)

Skin

- Dermat/o/logy >>> skin >>> Dermatology .
- Dermat/o/log/ist >>> Dermatologist .
- Dermat/itis > Dermatitis > skin inflammation



- Hepat/o >>> Liver
- Hepat/itis Hepatitis
- Hepat/o/mega/ly >Hepatomegaly > Enlarged liver .



Terminology

- Nephr/o/ >>> Kidney
- Nephr/o/logy >> Nephrology
- Nephr/o/log/ist >> Specialist in Kidneys
- Nephr/ec/tomy >> Nephrectomy >> Removing Kidney
- Nephr/itis >> inflammation of kidney



Terminology

- Neuritis
- Arthritis
- Salpingitis
- Otitis
- Hepetitis
- Nephritis
- Esophagitis
- Laryngitis
- Encephalitis
- Osteitis
- Menengitis
- Bronchitis
- Rhinitis
- Peritonitis
- Vasculitis
- Mastitis
- Tonsillitis
- Colitis

Terminology

- Arthroscopy
- Bronchoscopy
- Colonoscopy
- Cystcopy
- Esophagoscopy
- Gastrosocopy
- Laparoscopy
- Hysteroscopy
- Laryngoscopy
- Mediastinoscopy
- Procrosigmoidoscopy
- Sigmoidoscopy

